

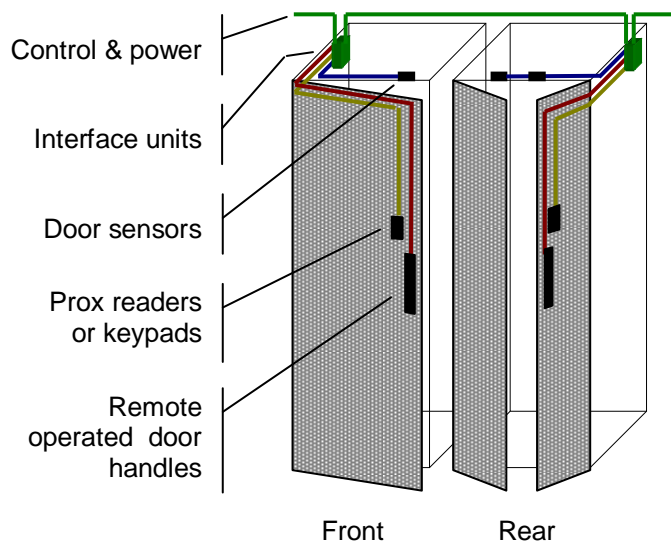
IntelliData Systems are able to provide a cabinet security system that is both integrated with the cabinet environment and power monitoring systems and may also be installed in cabinets from different manufacturers.

Features

- ❖ Controls access by specific people to specific cabinets at specific times
- ❖ Degrees of control from simple to paranoid
- ❖ Prox card, magnetic swipe or keypad PIN access control
- ❖ Direct door opening control from remote IntelliManager
- ❖ Validation registry kept securely on central server
- ❖ Logs all valid and invalid entry attempts
- ❖ Issues alerts to NOC if doors are opened without an entry validation

Integration

The IntelliAccess interface for the IntelliData Systems cabinet security system is a compact enclosure that mounts unobtrusively within each cabinet. One interface is required per access system, i.e. 2 interfaces are needed for each cabinet unless one access system (keypad or reader) controls both doors. The independent interface units connect to the IntelliPoller via the same control and power bus as the cabinet's power monitoring devices.



Security is controlled and monitored from the same IntelliServer and IntelliManager software suite as power and environmental conditions.

Access Control

There is a choice of prox card readers, magnetic swipe and keypads available and the system will support a reader/keypad per door; a reader/keypad per cabinet (controlling both doors) or a reader/keypad per group of cabinets. In addition, each door lock may have a back-up method of access control for use in the event of a system failure. For Rittal locks this is a mechanical key and for Dirak (Knuerr) locks it is a battery powered system. An alert is automatically generated if a cabinet is accessed using the back-up method.

Software

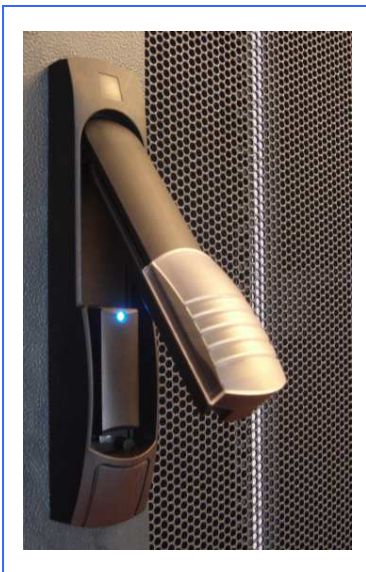
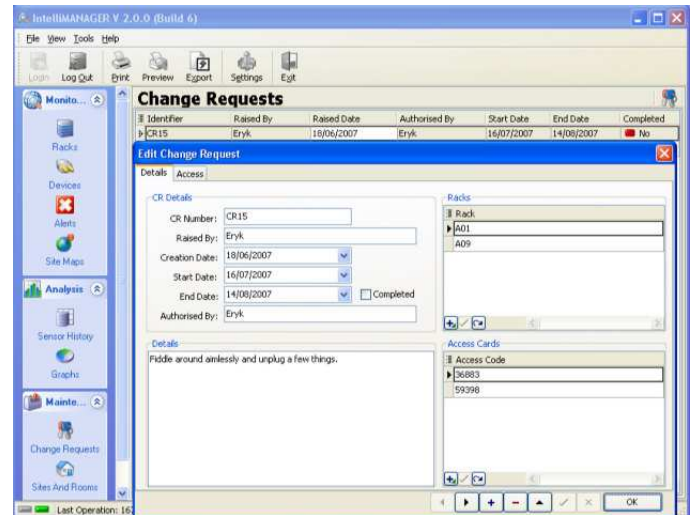
Control and logging of the security system are included within the standard IntelliManager software. All access attempts, successful or otherwise, are logged.

Any rack door may be opened directly from the normal monitoring grid.

The Maintenance access page allows entry to specific cabinets at specific times. Details of the work can either be recorded directly in the form, or the form can link to an external change request document.

A management overview page allows an administrator to see which personnel have cabinet access at any time.

Access control is always routed through IntelliServer. Access codes and valid card details are never stored at the cabinet. This system allows inert prox cards to be kept by secretarial or reception staff at a remote location to be activated once the designated user has confirmed receipt.



Door Handles

Each cabinet manufacturer offers a variety of door handles, each with a different mode of operation. Most handles also have a bypass system for access to cabinets in the event of a system failure. Accessing a cabinet this way will cause the IntelliServer to issue an alert to the NOC.